

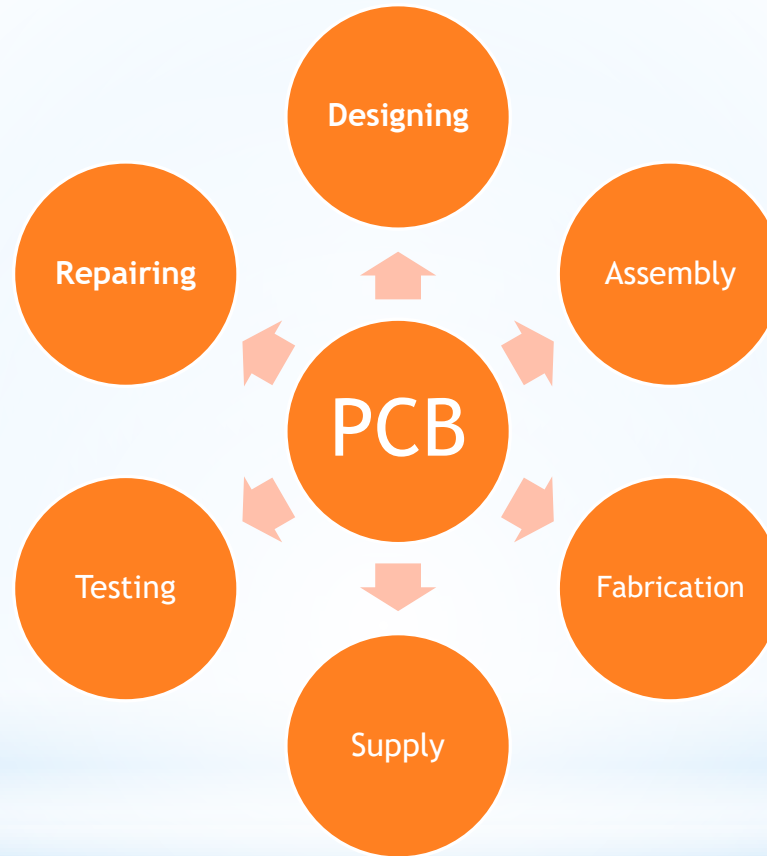
**EmHashLabs**

# Hardware Design and Contract Manufacturing

EmHashLabs

email - [sales@emhashlabs.com](mailto:sales@emhashlabs.com)

- \* Promoting “Make In India” vision by providing support for designing, assembly, manufacturing, testing and repairing of PCBs



- \* Trading of electronic component/equipment industries and R&D institutions at appropriate cost



# Aim and objectives

## ❖ Vertical Split Furnace

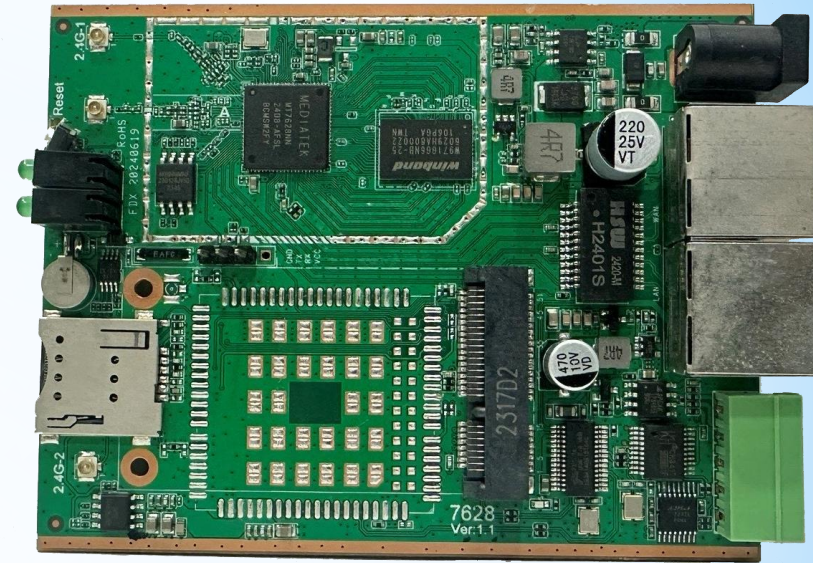
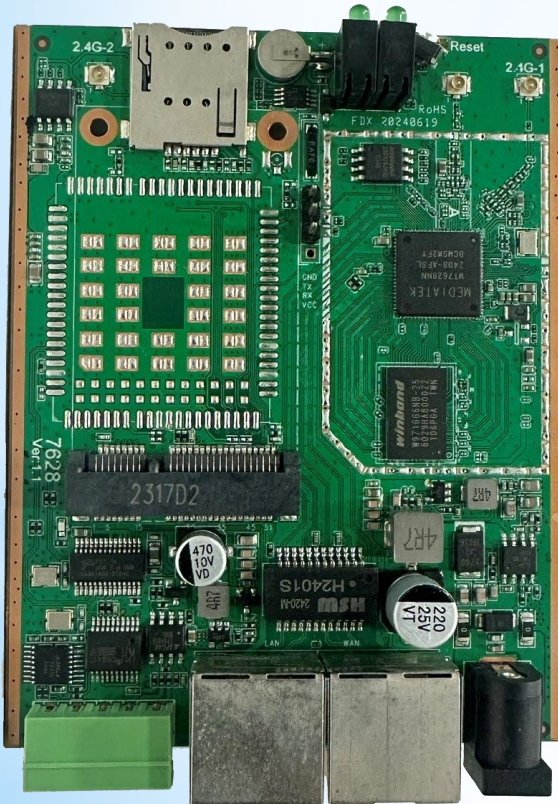
- ❖ Temperature up to 1000 °C
- ❖ 3kW Kanthal heaters
- ❖ Our own design of thyristerized power supply
- ❖ Connected with the fuel cell station to sense temperature



\* Development projects

# PCB designed and development for Industrial IOT Application

- ❖ RS485 serial port for data logging
- ❖ 4G miniPCle support for internet
- ❖ Single SIM option

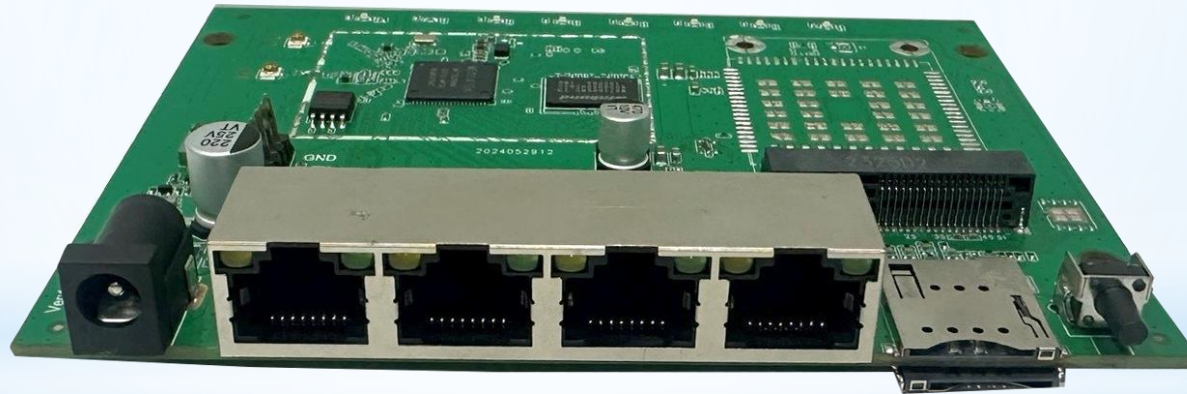


- ❖ 2x10/100 Mbps Ethernet Ports
- ❖ 12V DC Input Supply

\* PCB Development

# PCB designed and development for Multi-WAN/SDWAN Application

- ❖ 2.4 GHz WiFi Support
- ❖ 4G miniPCle support for internet
- ❖ Two SIM slots
  
- ❖ 4x10/100 Mbps Ethernet Ports
- ❖ 12V DC Input Supply



\* PCB Development

# PCB design and development for **Fiber Cut Monitoring Device**

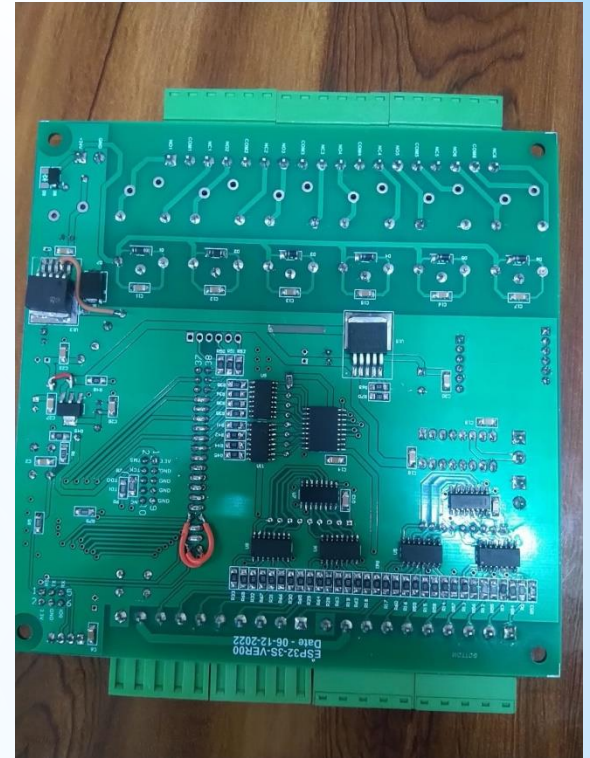
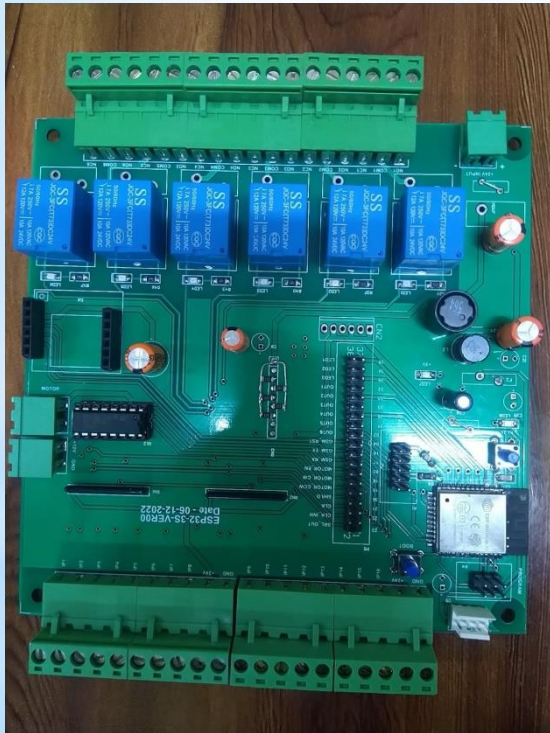
- ❖ High resolution sensor for detection of fiber tampering
- ❖ Works on 12V DC input



\* PCB Development

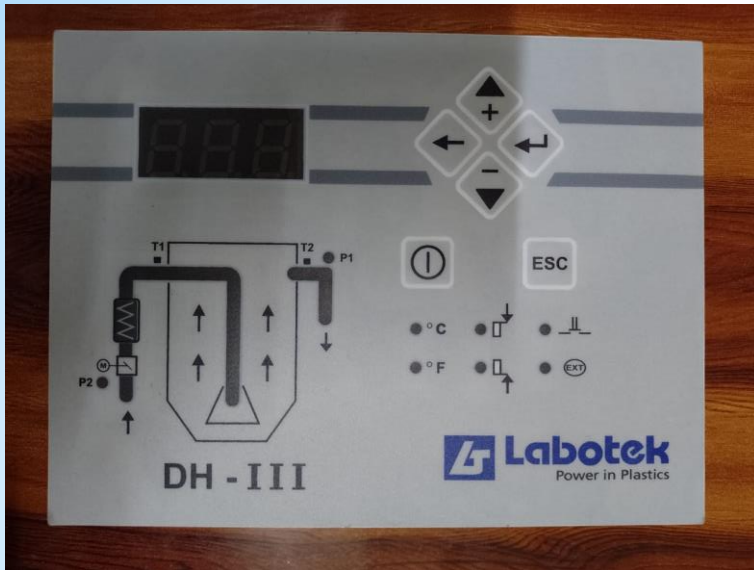
# PCB design and development for Relay control card

- ❖ Programmable sequential card
- ❖ Depending on the 5 inputs conditions 6 relays can be controlled

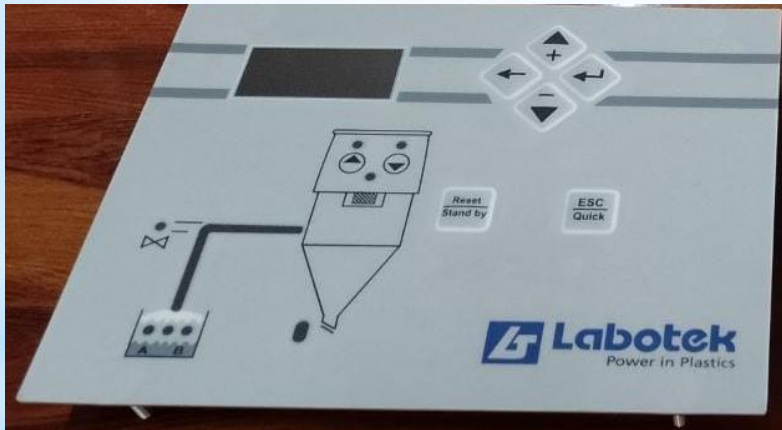


- ❖ ESP 32: Cards can be controlled through WiFi
- ❖ Can be controlled remotely through internet data

\* PCB Development

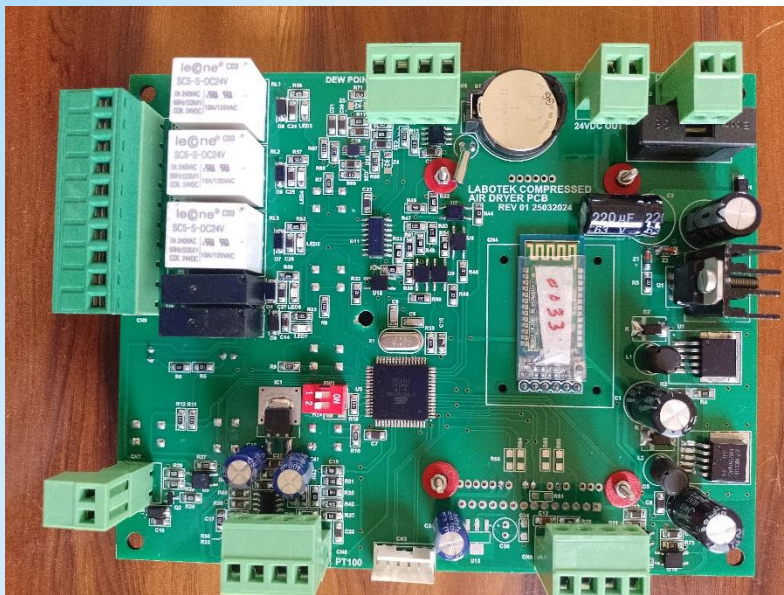


- ❖ Card designed and developed for **Labotek, Denmark**
- ❖ Required for machines used in plastic moulding
- ❖ New features added to control the card through Android application

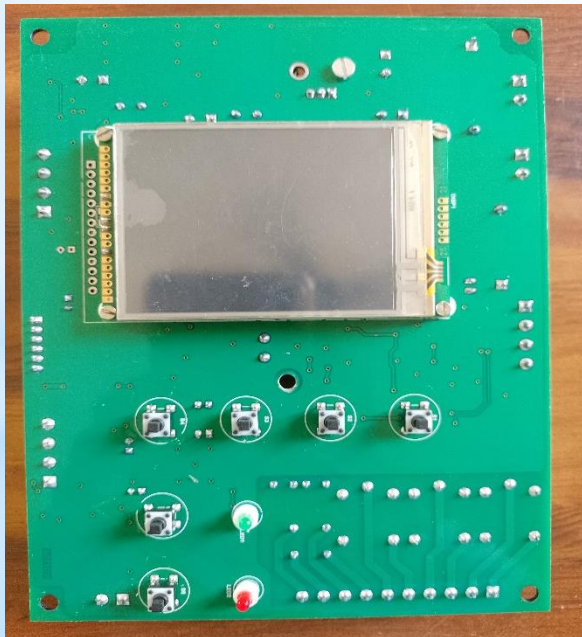


\* Electromechanic  
Electromechanic  
controllers



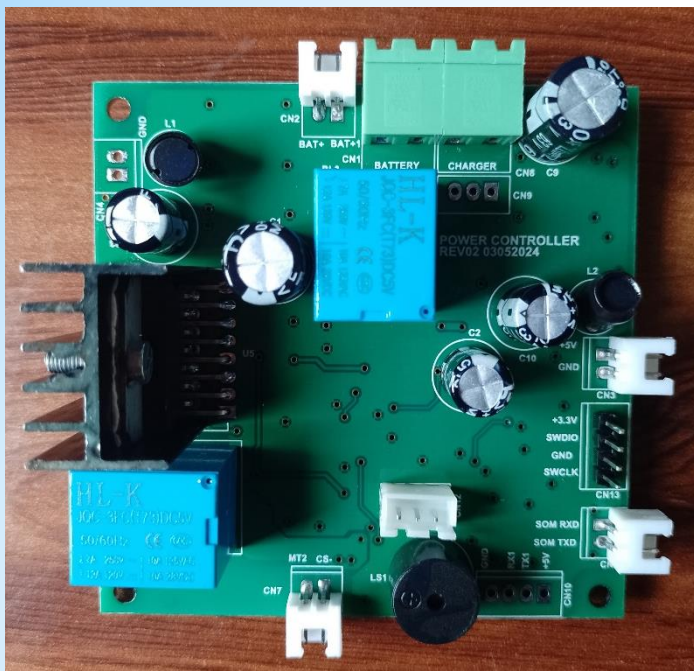


- ❖ Card designed and developed for Labotek, India
- ❖ Required for machines used for air dryer application
- ❖ New features added to control the card through Android application

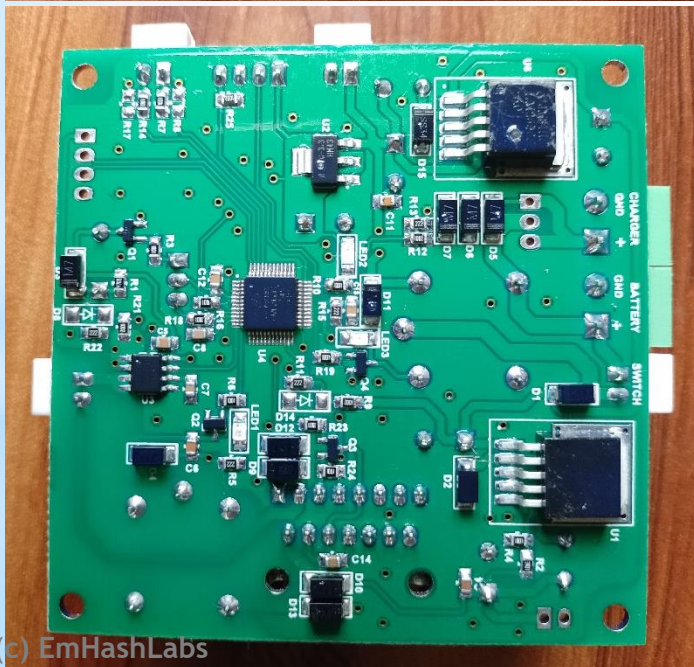


(c) EmHashLabs

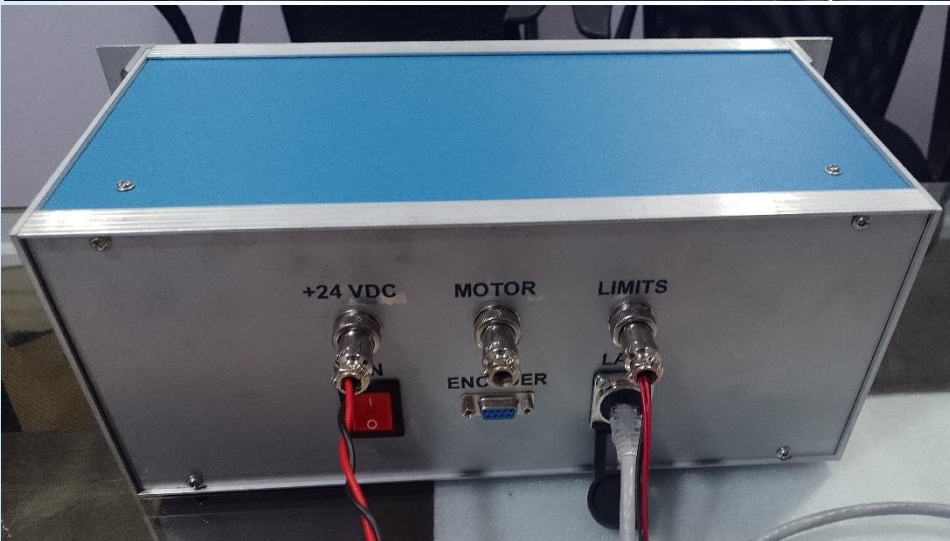
\* Electromechanic  
controllers



- ❖ Card designed and developed for Galleon
- ❖ Used in Air Sampler unit



\* controllers



## Single channel stepper motor controller

- ❖ Can be controlled through Ethernet
- ❖ Motors can be controlled sequentially and positions can be read through encoder/pulses
- ❖ Command set provided for communication through computer
- ❖ User friendly GUI also provided

\* Electromechanics  
controllers



## Two channel stepper motor controller

- ❖ Can be controlled through touch screen HMI
- ❖ Motors can be controlled sequentially and positions can be read through encoder/pulses
- ❖ Command set provided for communication through computer
- ❖ User friendly GUI also provided

\* Electromechanics  
controllers

# Automatic Pump Controller

- ❖ Used in Hospitals for controlling oxygen flow
- ❖ Automatic operation of two pumps by dividing the pump load
- ❖ Dual mode operation automatic switching between the pumps
- ❖ Control pump operation to maintain oxygen pressure
- ❖ Alarm system installed oxygen pressure



\* Control panel



## Humidifier and its controller designed and developed for humidity chamber

- ❖ Can be used to generate humidity up to 100%
- ❖ Automatic climate control

# \* Mechanical systems

## Specifications:

- ✓ Maximum board area 400mm X 300mm
- ✓ Mounting speed 4000cph
- ✓ Component placement accuracy  $\pm 0.05\text{mm}$
- ✓ In built suction and blow
- ✓ Component sizes applicable: 0402, 0603, 0805, 1206, 1210, diodes , transistor, QFP16x16mm
- ✓ 50nos of feeder slots
- ✓ 2 mounting heads, vision camera
- ✓ 0 to 360 degrees component angle



## \* Pick and place machine



## \* SE 936SD soldering guns

## Specifications:

- ✓ Power 60W (4 sets available)
- ✓  $\pm 3^{\circ}\text{C}$  temperature accuracy
- ✓ Temperature range 50 - 450  $^{\circ}\text{C}$
- ✓ Temperature stability  $\pm 1^{\circ}\text{C}$
- ✓ Regularly calibrated before use
- ✓ Well maintained and accurate

# \* Facilities available

- \* Labotek
  - \* Design Development & Supply of PCB.
- \* Fourvac Technologies
  - \* Design, Development of Customized PCB.
- \* SS Enterprizes
  - \* Design Support, Assembly and repair work
- \* Galleon
  - \* Design Support, Assembly and repair work
- \* GLVM
  - \* Design Support, Assembly and repair work
- \* Yash Enterprises
  - \* Design Support and Assembly and repair work
- \* Sinsil
  - \* Design Support

 **Existing customers**



\*Looking forward for serve you

**EmHashLabs**



\***Thank you for your  
attention...**

**Contact Us:** [sales@emhashlabs.com](mailto:sales@emhashlabs.com)

**Office Address:** #412, Sai Millenium, Punawale,  
Dattwadi, Pimpri-Chinchwad, Maharashtra 411033